

# Hello

## Thank you for your purchase high speed hair dryer

Before using this product, please read  
all instructions and warnings in the user  
manual and on the product:

# 您好

## 感谢您购买 high speed hair dryer

在使用本产品之前，请阅读用户手册  
中和产品上的所有说明及警告提示：

### Quick start 快速操作指南

### High speed hair dryer

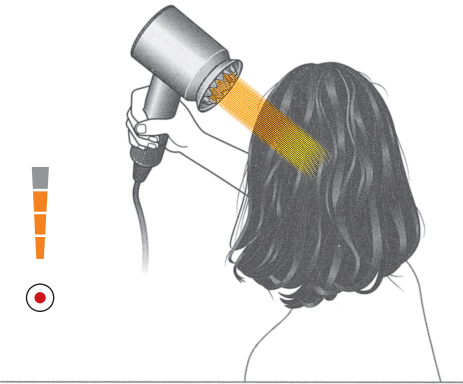
## Controls 控制



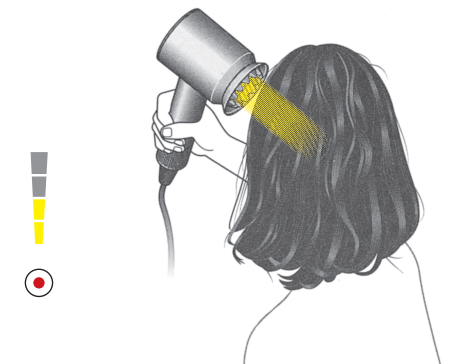
## Scalp protect mode 头皮保护模式



Your hair dryer automatically adjusts air temperature by  
measuring distance to the hair, to help protect your scalp.  
吹风机通过测量与头发之间的距离来自动调  
节气流温度，从而帮助保护您的头皮。



Airflow temperature automatically decreases  
as the machine gets closer to the scalp.  
当机器靠近头皮时，气流温度会自动降低。



The temperature control button will be  
disabled while mode is enabled.  
启用该模式时，将禁用温度控制按钮。

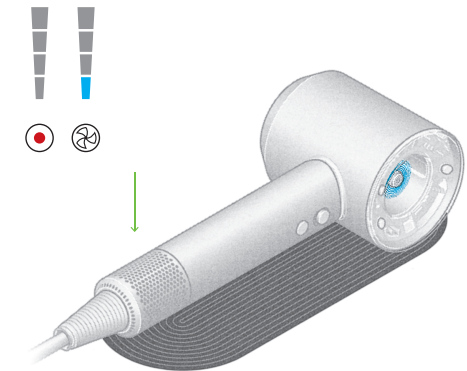
## Capsule illumination 胶囊指示灯

- High heat  
高温
- Medium heat  
中等温度
- Low heat  
低温
- No heat  
无温度



## Pause detect mode 暂停检测模式

When the machine is set down, the heater will be  
deactivated and airflow will drop to minimal flow.  
放下机器后，加热器将停止运行，气流降至最低。



## Attachment learning 配件学习



Your machine recognises your individual attachments  
and learns your preferred settings for each.  
All attachments are magnetic, for  
easy rotation and fitting.  
吹风机识别您的各个配件，并学  
习您对于每个配件的偏好设置。  
所有配件均采用磁吸式设计，便于旋转和安装。



## Attachments 风嘴

**Gentle air attachment**  
Evenly diffuses airflow for  
gentle, fast drying.  
柔和风嘴  
产生柔和平滑气流，  
可贴近头发打造蓬松造型。



**Smoothing nozzle**  
Reduces frizz for a  
smooth, natural look.  
顺滑风嘴  
减少毛躁，让秀发自然顺滑。



**Styling concentrator**  
Wider and thinner for  
precision styling.  
造型风嘴  
设计宽薄，实现精准造型。



**Diffuser**  
Improved diffusion of airflow for  
defined curls and waves.  
扩散风嘴  
改善气流扩散，营造精致卷发和波浪。



**Flyaway smoother**  
防飞翘顺发风嘴  
**Smoothing mode**  
Use on damp hair for  
smooth, straighter styles.  
顺滑模式  
湿发造型，打造柔顺直发。

**Flyaway mode**  
Use on dry hair to hide shorter  
hairs for a smooth, shiny finish.  
防飞翘模式  
干发造型，隐藏飞翘，打  
造顺滑闪亮的秀发。

