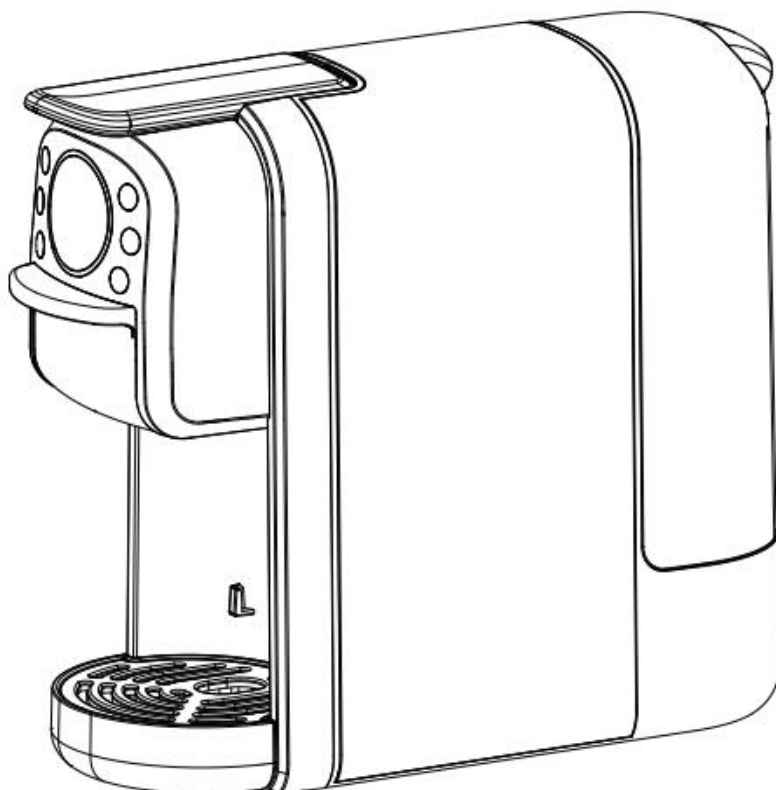


Multi Capsule Coffee Machine – User manual

Model no.: CM-C05A CM-C05B

Read this manual carefully before using. Keep it properly.



Brief introduction:

This product is a multifunctional capsule coffee machine in the coffee machine system of our company, with novel and unique appearance, can coffee with rich grease and foam. It's easy and safe to operate, also it's easy to clean.

Specification:

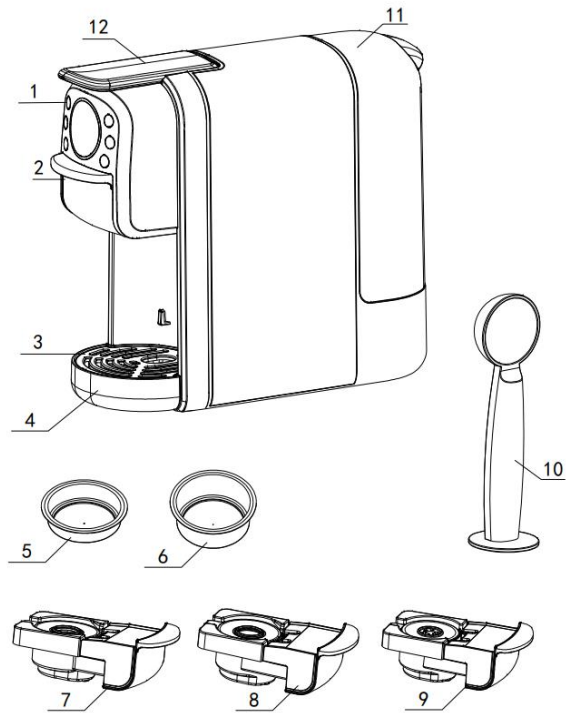
Voltage:220-240V 50/60Hz

Power:1400W

Water tank:700mL

V

Part instruction



1. control key

2. adapter

3. splashboard

4. drip tray

5.Single cup powder bowl

5. double cup powder bowl

6. Coffee powder adapter

7. Nespresso capsule adapter

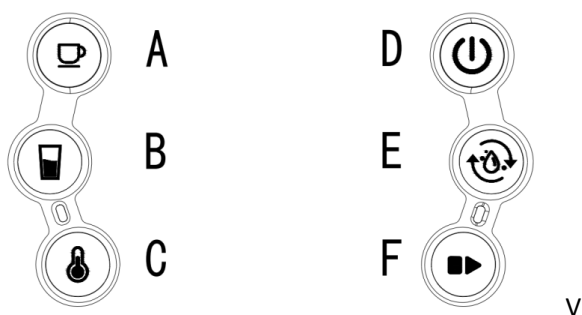
9.Dolce Gusto capsule adapter

10.power spoon&pressure

11.water tank

12. Handle

Display introduction



A. Coffee key B.Hot water key C.Temperature control

B. D.ON/OFF key E.Self-cleaning key F:Start/Stop key

Warning


1. Before use, check that the voltage of the socket corresponds to the parameters on the coffee machine nameplate.
2. Please make sure the machine is plugged into the socket before using it.
3. Keep children away when using.
4. To prevent fire and electric shock, do not put the power cord or plug into water or any other liquid; do not damage, excessively bend or stretch the power cord, and do not place heavy objects on the power cord.
5. When cleaning or not in use, please unplug the appliance and wait until it cools down before cleaning the accessories.
6. Do not use the device in high temperature, high magnetic field, humid environment, and do not place the coffee machine on hot surface, near fire or other electrical appliances, such as refrigerator.
7. Do not use the machine if the power cord or plug is damaged, the machine is faulty, or damaged in any way. Return the machine to the nearest authorized service center for inspection and repair, or contact your dealer.
8. Please use original accessories.
9. This machine is only used for making coffee. Do not use it for other purposes and keep it in a dry environment.
10. Place the coffee maker on a flat surface or table with the power cord not hanging over the edge of the table or counter.
11. Make sure the power cord does not touch hot surfaces of the appliance.
12. When the coffee machine is in operation, do not touch any hot parts with your hands.
13. Clean and maintain the coffee machine parts regularly to ensure the quality of coffee and extend the service life of the coffee machine.
14. When the coffee machine is working, do not move it or turn off the power.
15. Do not operate without water.

16. To ensure safety, please read the instructions carefully and master the correct usage methods.
17. Do not place the coffee machine or power cord in water or other liquids for cleaning.
18. Do not use outdoors.
19. Before using for the first time, please boil it twice in clean water to remove the odor.
20. For household use only, do not use for other purposes.
21. Please save these instruction booklets for future reference.
22. Do not immerse the machine in water.
23. Attention should be paid to the potential injury caused by improper use. The surface of the heating element will generate residual heat after use.
24. The coffee machine must not be placed in a cupboard while in use.
25. Children aged 8 years and over may use this appliance provided they have been given supervision or instruction on its safe use and understand the hazards involved.
26. Children are not allowed to clean or use the device unless they are over 8 years old and accompanied by a guardian. Please keep the device and its power cord out of reach of children under 8 years old.
27. The appliance can be used by persons with reduced physical, sensory or mental capabilities, or lack of experience and knowledge, provided they have been given supervision or instruction concerning use of the appliance in a safe way and understand the hazards involved.)
28. Children are not allowed to use this appliance.
29. If the mains cord is damaged, you must have it replaced by the manufacturer, its service agent or similarly qualified persons in order to avoid a hazard.

Before use and the first using:

1. If the mains cord is damaged, you must have it replaced by the manufacturer, its service agent or similarly qualified persons in order to avoid a hazard.
2. Open the handle, push the brewing cup you want to use into the brewing chamber, and close the handle.
3. Fill the water tank with pure drinking water at room temperature until it reaches the maximum capacity mark; or remove the water tank from the coffee machine and then fill it with water.

(Note: When taking out and inserting the water tank, keep it vertical. Gently press down the water tank when inserting it to ensure that the water tank is tightly and correctly connected to the water valve seat.)

4. Place a large cup under the water spout.
5. Connect the power supply, press  button to start the coffee machine, press the coffee button/boiling water button, and the indicator light will stay on.
6. After confirmation, press the execute button, the coffee button/boiling water button will flash, and after preheating is completed, the coffee button/boiling water button will be always on.
7. Press the execute button and the pump will pause and restart metering.

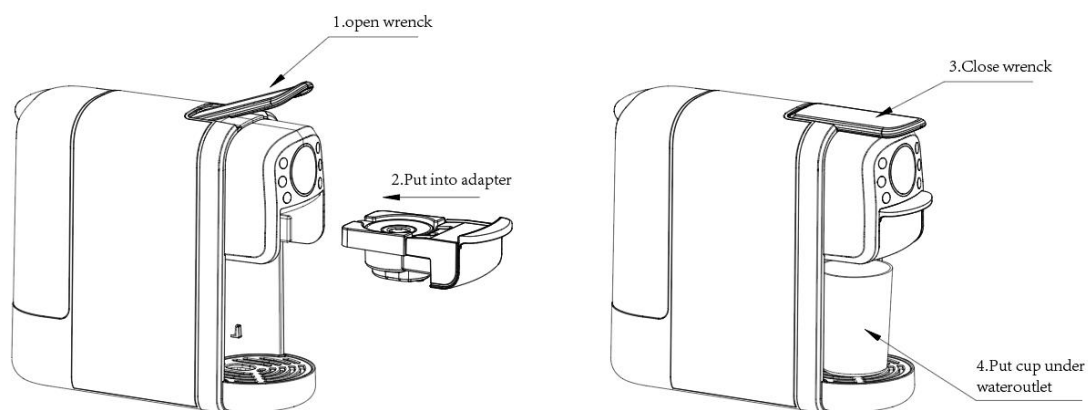
Cleaning the machine: When using the coffee machine for the first time or if it has not been used for a long time, please add two more cups of water to clean the coffee machine (do not put capsules in the brewing cup).

Follow these steps:

- a. Turn on the machine and press the self-cleaning button for 3 seconds to allow water to pass through the electromagnetic pump to clean the internal pipes of the entire coffee machine;
- b. Pour out the water in the cup;
- c. Repeat several times;
- d. After operation, empty any remaining water from the drip tray.

Daily Operation

1. Add room temperature drinking water to the maximum capacity mark of the water tank.
2. After the coffee machine is powered on, press the power button, the coffee machine enters standby mode, select the coffee/boiling water button, press the execute button to start preheating, and after the preheating is completed, the water pump will directly pump water out of the coffee/boiling water button. During the preheating and water/coffee process, the execution light will flash, and the digital tube will display 1% to 100% for completion, and it will be always on after completion. You can press the execute button to interrupt in the middle and re-measure after turning it on.
3. Open the handle and put in the required brewing components, close the handle, and place the coffee cup under the water outlet. As shown in the following figure:



4. Press the coffee button/boiling water button as needed. Press once for a small cup, twice for a medium cup, and three times for a large cup. Press the execution button to start making coffee (pressing the execution button during the making process will interrupt the making process).
- a. Coffee button single-press function: Press the coffee button once to light up the small cup, twice to light up the medium cup, and three times to light up the large cup (light prompt: the execution button light flashes, the power button light is always on, and the coffee button light is always on)
- b. Single-press function of the boiling water button: Press the boiling water button once to turn

on the small cup light, press twice to turn on the medium cup light, and press three times to turn on the large cup light (light prompt: the execution button light flashes, the power button light is always on, and the coffee button light is always on;

c. Temperature adjustment button function: Press the temperature adjustment button, press once (the temperature adjustment button stays on and the digital tube displays 55° C); press twice and the digital tube displays 75° C; press three times and the digital tube displays 100° C (the temperature adjustment in coffee mode is invalid and the default setting temperature is 90° C)

Note: After making coffee or plugging in the machine, if there is no operation in standby mode, the coffee machine will automatically shut down after 30 minutes, and all button lights will go out. Press "On/Off" again to restart the coffee machine.

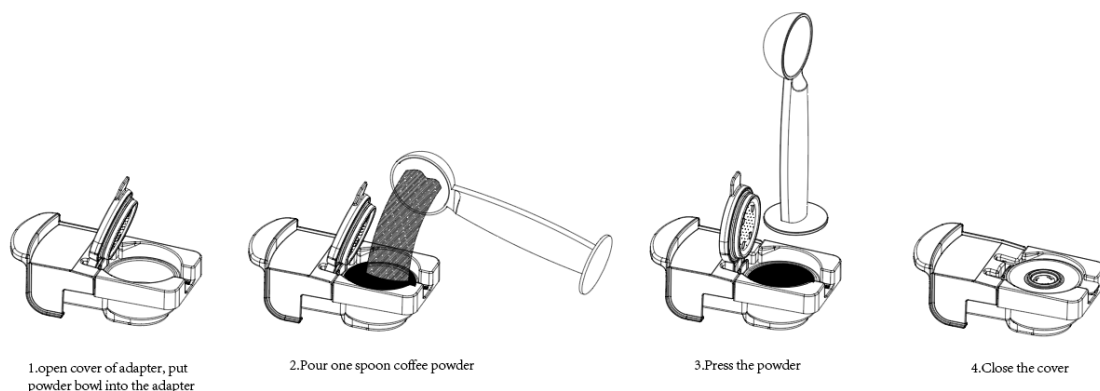
5. When the water tank of the coffee machine is short of water, it will generally enter the water shortage protection state in about 5-10 seconds, and the three indicator lights will flash quickly.

6. Press any button again and the coffee machine will enter the standby state.

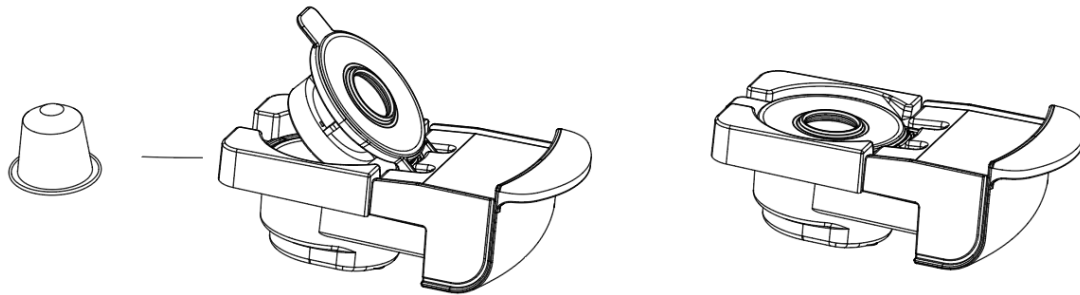
7. To avoid injury, the handle should not be opened during coffee making. The handle can only be opened when all indicator lights are on.

Using of adapter

1. Coffee powder adapter: As shown in the below picture: (Note: The single cup powder bowl can hold up to 5-6g of coffee powder, and the double cup powder bowl can hold 11-12g of coffee powder)



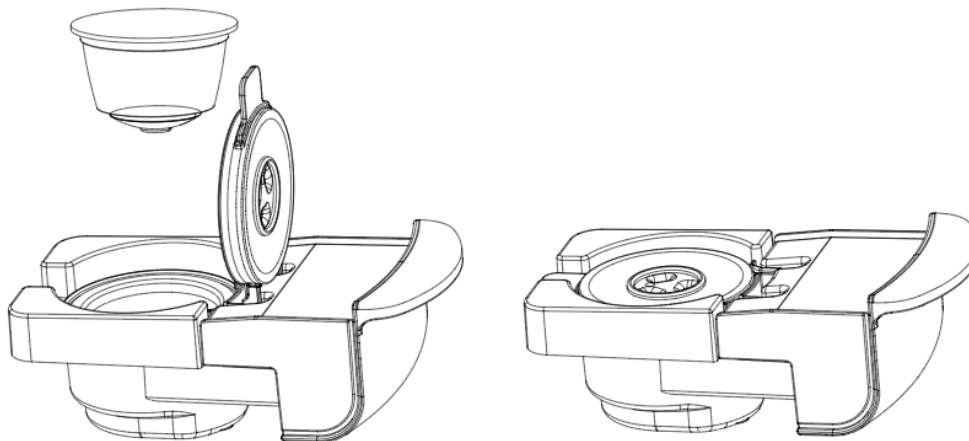
2. Nespresso capsule adapter, see as below picture:



1.open cover of the adapter
put nespresso capsule into it.

2.close the cover

3. Dolce gusto adapter, see as below picture:



1.open the cover of adapter,
put Dolce Guosto capsule into it.

2.Cloes the cover

Cleaning and maintenance

1.Clean the water tank

2.Grasp the handle of the water tank and lift it diagonally upward to remove it.

3.The water tank and brew cup assembly should be cleaned once a week. Wash with mild detergent, rinse thoroughly and wipe dry.

Note: The water tank and brewing cup assembly are not dishwasher safe.

Descaling

You can descale and clean the coffee machine regularly according to your personal needs.

1. First put the descaling agent (about 10g) into the water tank, and then add water to the "max" line.
2. Turn on the coffee machine and press the self-cleaning button for 3 seconds to wait for the coffee machine to preheat successfully; and place a large cup under the water outlet. The water pump and boiler will enter the continuous working mode, allowing clean water containing descaling agent to flow through the water pipes of the entire coffee machine until the coffee machine stops working due to lack of water (Note: If you want to stop the descaling mode midway, press any button to stop midway and return to standby mode).
3. When descaling is complete, if you need to repeat the cleaning function, press the self-cleaning button again for 3 seconds to continue descaling.
4. Replace the clean water in the water tank, press the large cup button, the water pump starts working, and the clean water flows through the water pipes of the entire coffee machine to clean the pipes. Repeat this cycle 5 times, and the coffee machine is descaling complete.

Body cleaning

1. Disconnect the machine from the power source and allow it to cool completely before cleaning.
2. Wipe the exterior and some accessories of the coffee machine with a damp cloth or cleaning sponge.

Note: Do not use alcohol or solvent cleaners to clean, and do not immerse the coffee maker in water to clean.

troubleshooting

symptom	reason	Revision
No water comes out when making coffee	<ol style="list-style-type: none"> 1. There is no water in the water tank/the water tank is not installed properly 2. The coffee machine has not been preheated 3. The coffee machine is not turned on 	<ol style="list-style-type: none"> 1. Add water to the water tank and check whether the water tank is in place. 2. Wait for the coffee machine to preheat before making coffee. 3. Check whether the coffee machine is powered on; whether the coffee machine is turned on.
No oil when making espresso powder	The coffee powder is too fine/not flattened. Also, the powder should not be pressed too tightly.	Replace the coffee grounds and use a tamper to flatten the grounds.
More or less coffee	<ol style="list-style-type: none"> 1. Too much or too little coffee powder. 2. There are differences in coffee capsules from the same batch. 3. The coffee powder bag is not placed properly. 	<ol style="list-style-type: none"> 1. Fill the coffee powder according to the standard amount, 1 scoop for 1 cup and flatten it. The coffee powder should not be too coarse or too fine. If it is too coarse, the coffee cannot be fully extracted, and if it is too fine, the amount of coffee produced will be affected. 2. It is normal for coffee capsules from the same batch to have differences. 3. Place the coffee powder bag correctly.